



Radon measurements: Sensor networks for large buildings and future cities

Tanita J. Ballé

05.10.2022

Metrology for Industry (Call 2023)



Why?



^{222}Rn is the biggest natural source of radiation to the public.

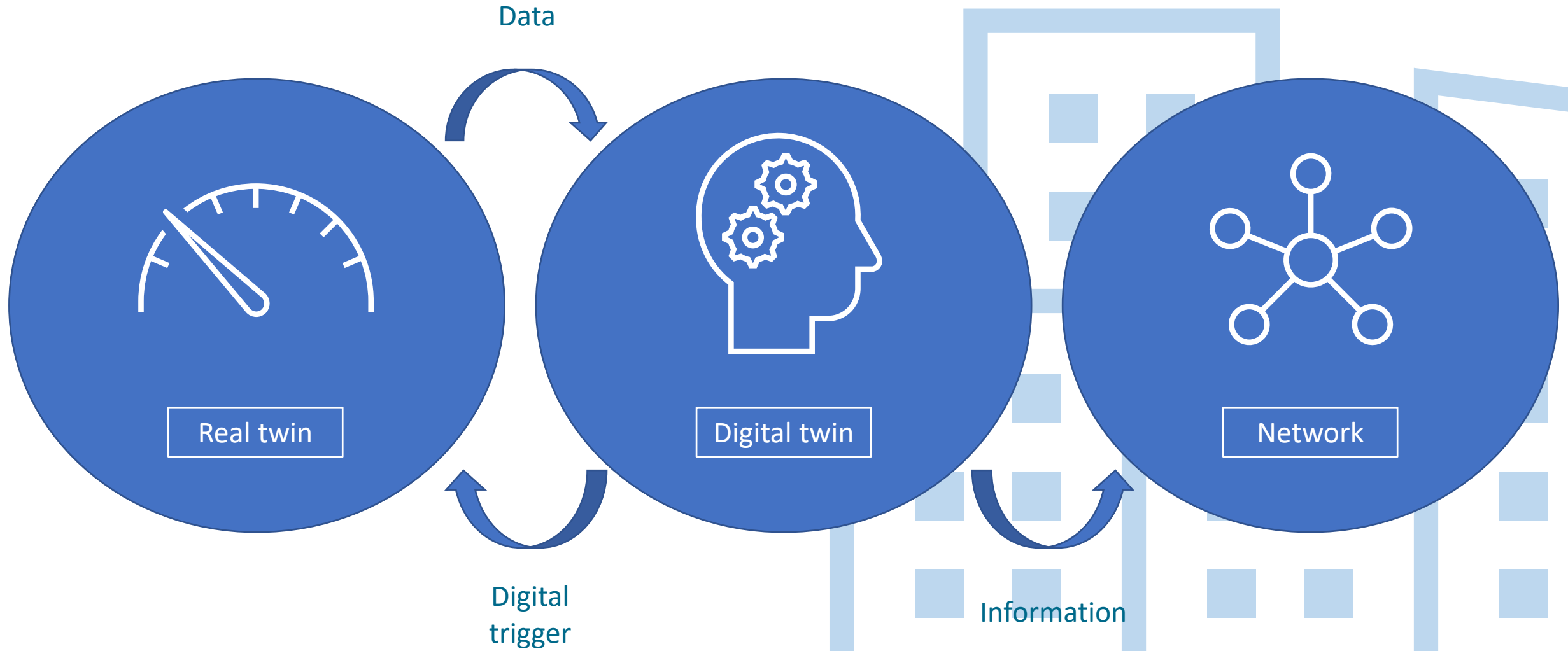


Regular measurements exist only at certain stations.



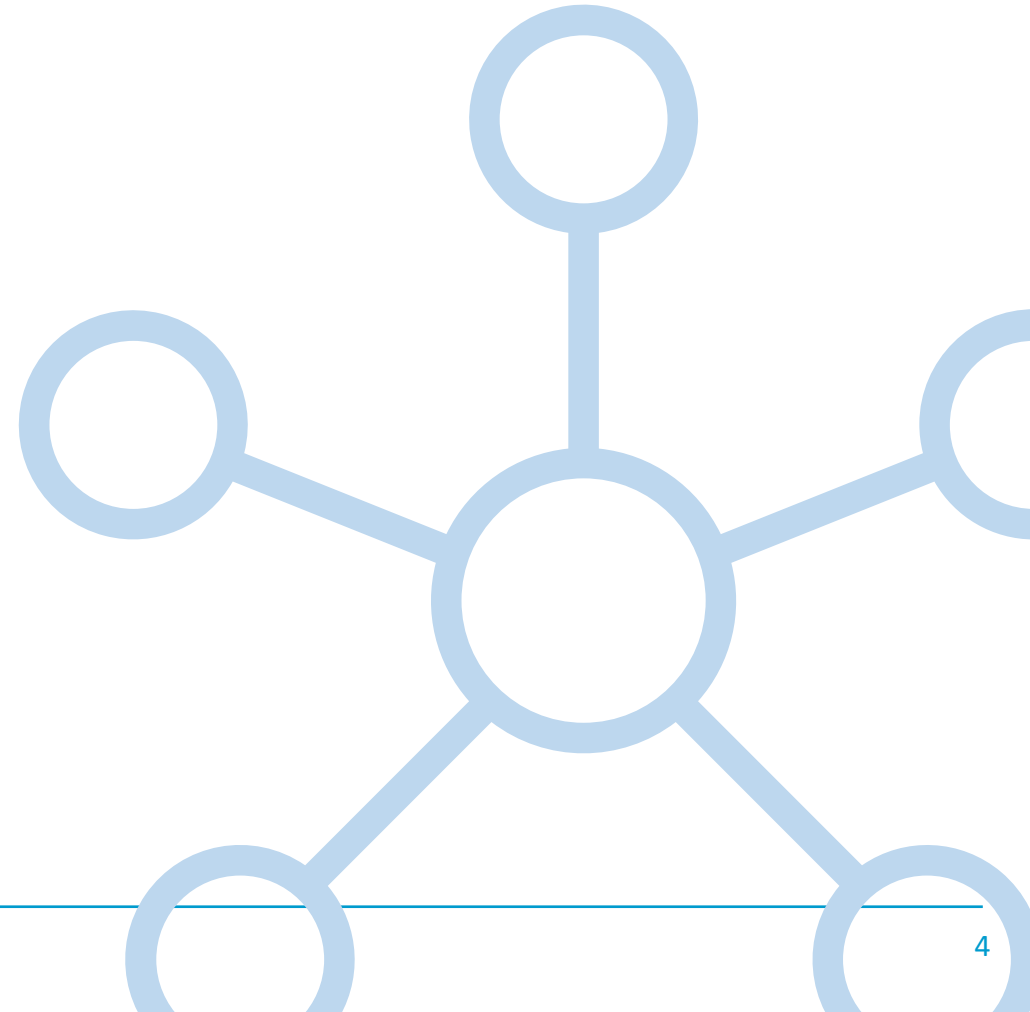
Remediation of high indoor ^{222}Rn concentration for the most part through ventilation.
→ High energy consumption.







✍ Creation of ^{222}Rn maps.



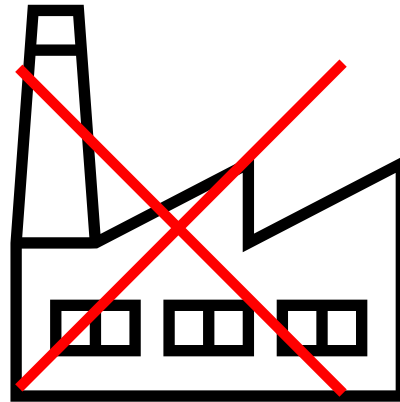


Future prospects

Apply metrologically robust procedures to automatic data processing with AI/ML.



Optimize energy consumption.



Comfortable and healthy air.





Thank you for your attention!

